

Theme from the Motion Picture WORKING GIRL

Let the River Run

For 2-Part* and Piano

Duration: ca. 2:35

Arranged by
MAC HUFF

Words and Music by
CARLY SIMON

Slowly (♩ = ca. 71)

Piano

C² F²

mp

C² F G⁷/F F G

3

5

Part I

mp

Let _____ the riv-er run, let all the dream - ers wake the

Part II

mp

Let _____ the riv-er run, let all the dream - ers wake the

C F C Dm C

5

*Available separately:
3-Part Mixed (00156318), 2-Part (00156319), VoiceTrax CD (00156320)
halleonard.com/choral

DO NOT
PHOTOCOPY



Copyright © 1989 C'est Music and T C F Music Publishing, Inc.
This arrangement Copyright © 2016 C'est Music and T C F Music Publishing, Inc.
All Rights for C'est Music Administered by BMG Rights Management (US) LLC
All Rights Reserved Used by permission

na - tion. Come, the new Je - ru - sa -

na - tion. Come, the new Je - ru - sa -

Am G F Gm⁷/F F Am G

8

Driving pop ballad (♩ = ca. 90)

lem.

lem.

Driving pop ballad (♩ = ca. 90)

C F/C C

mf

11

13

mf

Sil - ver cit - ies rise, the morn - ing

mf

Sil - ver cit - ies rise, the morn - ing

C F

13

lights, _____ the streets that lead them, and

lights, _____ the streets that lead them, and

C Am G

15

si - _____ rens call them on with a

si - _____ rens call them on with a

F Am G

17

song. _____ It's

song. _____ It's

C F/C C

19

ask - ing for the tak - ing.

ask - ing for the tak - ing.

Am D/F#

21

Detailed description: This system contains measures 21 and 22. It features two vocal staves and a piano accompaniment. The vocal parts have a long note in measure 21 followed by a melodic line in measure 22. The piano accompaniment consists of chords in the right hand and a moving bass line in the left hand. Chord changes from Am to D/F# occur at the start of measure 22.

Trem - bling, shak - ing. —

Trem - bling, shak - ing. —

F2 C/E

23

Detailed description: This system contains measures 23 and 24. The vocal parts continue with the 'Trembling, shaking' phrase. The piano accompaniment features chords in the right hand and a moving bass line. Chord changes from F2 to C/E occur at the start of measure 24.

Oh, — my heart is ach - ing. We're

Oh, — my heart is ach - ing. We're

Am Bb

25

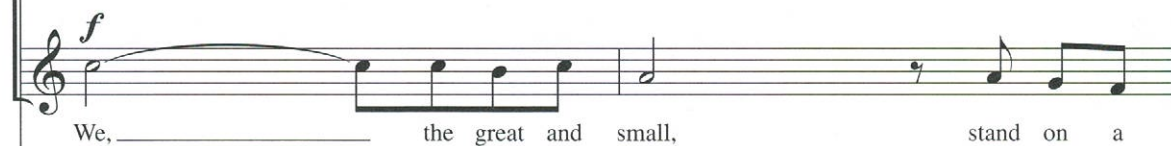
Detailed description: This system contains measures 25 and 26. The vocal parts continue with the 'Oh, my heart is aching. We're' phrase. The piano accompaniment features chords in the right hand and a moving bass line. Chord changes from Am to Bb occur at the start of measure 26.

cresc.*cresc.*

G

G⁷/FEm⁷Dm⁷G⁷*cresc.*

29



C

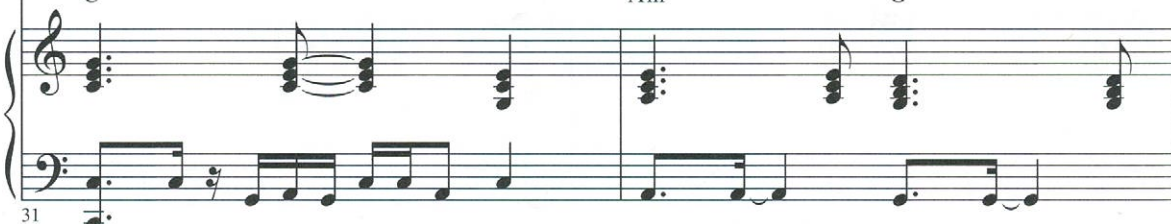
F



C

Am

G



sire through the dark - ling

sire through the dark - ling

F Am G

33

dawn. It's

dawn. It's

C F/C C

35

ask - ing for the tak - ing.

ask - ing for the tak - ing.

Am D/F#

37

Trem - bling, shak - ing. —

Trem - bling, shak - ing. —

F2 C/E

39

Oh, — my heart is ach - ing. We're

Oh, — my heart is ach - ing. We're

Am B \flat

41

cresc.
com-ing to the edge, run - ning on the wa - ter, com-ing through the fog, your sons and daugh-ters.

cresc.
com-ing to the edge, run - ning on the wa - ter, com-ing through the fog, your sons and daugh-ters.

G G 7 /F Em 7 Dm 7 G 7

cresc.

43

45

ff

Let _____ the riv - er run, let all the

ff

Let _____ the riv - er run, let all the

C F

ff

45

dream - ers wake the na - tion.

dream - ers wake the na - tion.

C Am G

47

Come, _____ the new Je - ru - sa -

Come, _____ the new Je - ru - sa -

F Am G

49

lem.

lem.

C F/C C

51

Come, _____ the new Je - ru - sa -

Come, _____ the new Je - ru - sa -

F Am G

53

lem.

lem.

C F/C C

55

RANGES



PERFORMANCE NOTES

"Let the River Run" is a song written by Carly Simon and featured in the 1988 movie, "Working Girl." That year, the song won an Academy Award and Golden Globe Award for Best Original Song.

The lyric was inspired by the poetry of Walt Whitman and was not composed with any political or religious point of view.

CHORAL PREPARATION

One key to a successful performance of this piece is to carefully plan phrasing throughout. In general, all phrases are in two or three measure groups. These long phrases are especially important when you add the "jungle drums" that pulse under the music starting in measure 11.

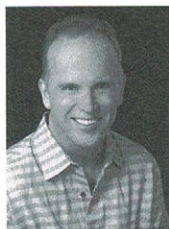
Use the phrasing pattern established in measures 5-11 as a guide for phrasing throughout the piece:

"Let the river run," (*breath*)
"let all the dreamers wake the nation." (*breath*)
"Come, the new Jerusalem." (*breath*)

This phrasing pattern will help bring drama and power to the piece.

I hope you enjoy this great movie song in your next concert.

– Mac Huff



ARRANGER

Mac Huff is one of the leading arrangers and composers in the music industry. He is also an accomplished pianist, performer and teacher. Over the years he has composed and arranged music as well as served as musical director for shows at ABC-TV, NBC-TV, The Walt Disney Co., Hallmark, Inc., the Macy's Thanksgiving Day Parade, and Six Flags Show Productions. In addition, he is in demand as a lecturer and guest artist for various music festivals and workshops.